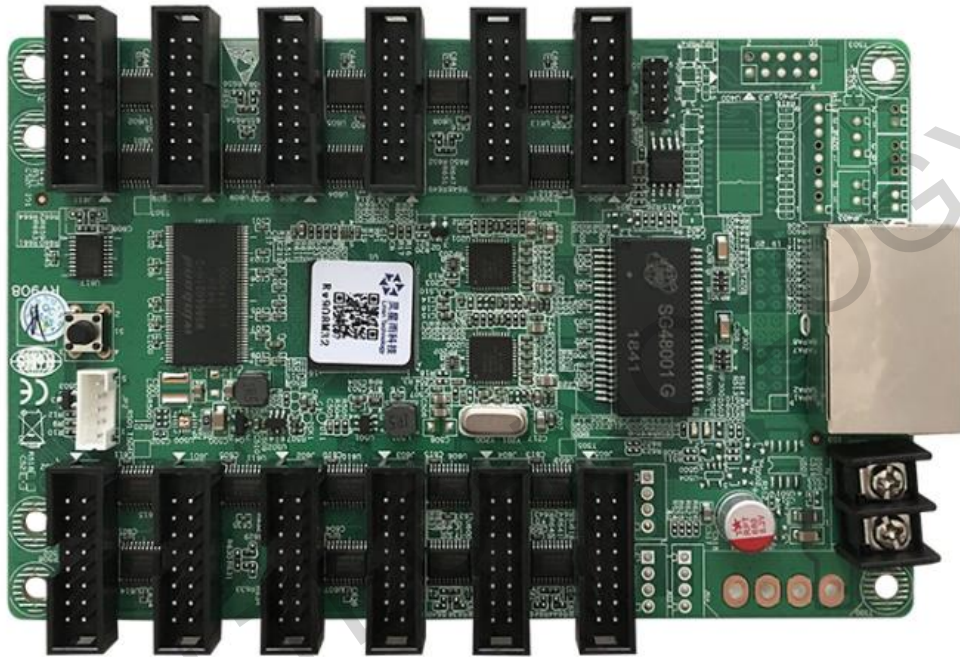


Receiver

RV908M32

V1.3
DEC 2018

1.Function



RV908M32 is designed for the standardization manufacturer, integrated with hub card whose size is the same with RV901 and it is compatible with RV901. The function of RV908M32 is similar to the one of RV901 plus a hub75 card, but RV908M32 supports up to 32 scan mode.

1) 12 hub75 interface on board(supports 32 scan mode), no

Official website: www.linsn.com

Add: Floor 15&16, Jiajiahao Business Building, No. 10168, Shennan Blvd,
Nanshan District, Shenzhen

Tel: +86-0755-86183590/ 4008836968

extra hub card needed;

- 2) Supports 12-bit HDMI colors input (required the 9th generation sending card);
- 3) Using 18-bit signal processor, maximum support 18-bit (260,000) gray (each of red, green and blue);
- 4) Single card maximum support 1024×768 pixels (**Please note that there are recommended values depending on the design of LED screen**);
- 5) Single card can output 24 groups RGB data;
- 6) Supports 138 decode, 595 serial decode and so on.
- 7) Supports pixel-by-pixel brightness and color calibration; single-card color space conversion;
- 8) High refresh rate and high grey level with most of the driver ICs;
- 9) Supports general driver ICs and most of the PWM driver ICs
- 10) Support hot backup with dual receiver cards for demanding performances screen;
- 11) Support network cable BER test;
- 12) In line with RoHS standards;
- 13) In line with EU standards CE-EMC class B;

Official website: www.linsn.com

Add: Floor 15&16, Jiajiahao Business Building, No. 10168, Shennan Blvd,
Nanshan District, Shenzhen

Tel: +86-0755-86183590/ 4008836968

2.RV908M32 PINOUT

Receiving card get 12 outputs only when it is under 24-set-data-group working mode. Each interface output data is as following:

R1	1	2	G1
B1	3	4	GND
R2	5	6	G2
B2	7	8	E
A	9	10	B
C	11	12	D
CLK	13	14	LAT
OE	15	16	GND

3. Model table

RV908M32 is in stock. RV918M32 need make to order.

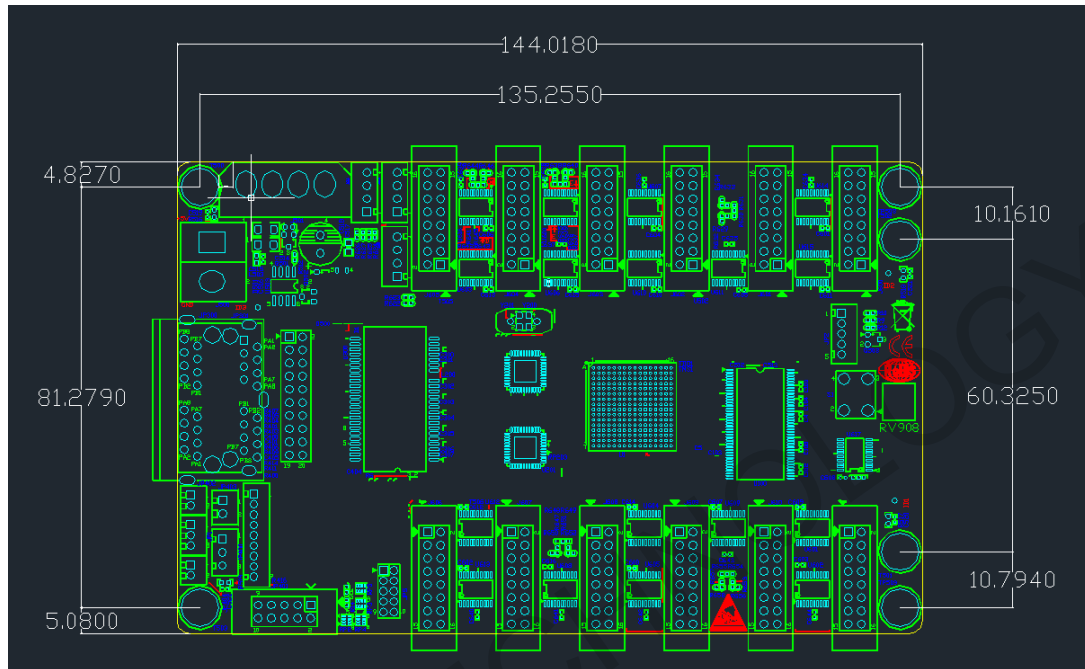
Model	RJ45 Direction	output interface type
RV908M32	90 Degree	interface in front side
RV918 M32	180 Degree	interface in front side

Official website: www.linsn.com

Add: Floor 15&16, Jiayahao Business Building, No. 10168, Shennan Blvd,
Nanshan District, Shenzhen

Tel: +86-0755-86183590/ 4008836968

4. Dimension and position of the installation holes



5. Working conditions

Rated voltage (V)	5	maximum value	5.5	Minimum value	4.5
Rated current (A)	0.80	maximum value	0.87	Minimum value	0.73
Rated power consumption (W)	4.0	maximum value	4.8	Minimum value	3.3
Working temperature (°C)	-20°C ~ 75°C				
Working humidity (%)	0% ~ 95%				

END

Official website: www.linsn.com

Add: Floor 15&16, Jiajiahao Business Building, No. 10168, Shennan Blvd,
Nanshan District, Shenzhen

Tel: +86-0755-86183590/ 4008836968