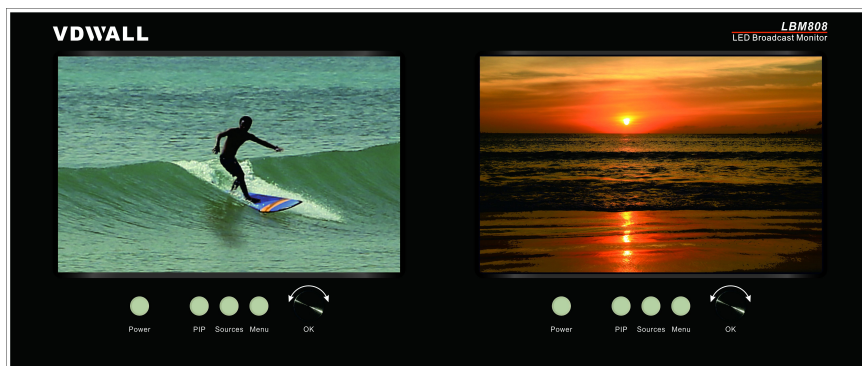


LBM808 Broadcast Monitor

User Manual



Content

Chapter 1: Safety precautions	3—3
Chapter 2: Item list	4—4
Chapter 3: Hardware connection	
1. Rear view	5—5
2. Port description	5—5
3. Connection diagram	6—6
4. Specifications	6—7
5. Dimension	7—7
6. RJ45-RS232 cable	8—8
Chapter 4: Front panel	
1. Front view	8—8
Chapter 5: Basic operation introduction	
1. Power switch	8—8
2. Main source selection	8—9
3. PIP source selection	9—9
4. Main settings	9—11
Chapter 6: Control software	11—12
Chapter 7: Copyright information	12—12

Chapter 1: Safety precautions

Danger!

There is high voltage in the processor, to prevent any unexpected hazard, unless you are a maintenance personnel, please do not open the cover of the device.

Warning!

- a) This device shall not encounter water sprinkle or splash, please do not place anything containing water on this device.
- b) To prevent fire, keep this device far from any fire source.
- c) If this device gives out any strange noise, smoke or smell, please immediately unplug the power cord from receptacle, and contact local dealer.
- d) Signal cables are not hot swappable.**

Caution!

- a) Please thoroughly read this manual before using this device, and keep it safe.
- b) In the event of lighting or when you are not going to use the device for a long time, please pull the power plug out of receptacle.
- c) Nobody other than professional technicians can operate the device, unless they have been appropriately trained or under guidance of technicians.
- d) To prevent equipment damage or electric shock, please don't fill in anything in the vent of the device.
- e) Do not place the device near any water source or anywhere damp.
- f) Do not place the device near any radiator or anywhere under high temperature.
- g) To prevent rupture or damage of power cords, please handle and keep them properly.
- h) Please immediately unplug power cord and have the device repaired, when
 - i. Liquid splashes to the device.
 - ii. The device is dropped down or cabinet is damaged.
 - iii. Obvious malpractice is found or performance degrades.

Chapter 2: Item list

Please unpack the product with care, and then check whether all the following items are included in the package. If anything is found missing, please contact the dealer.

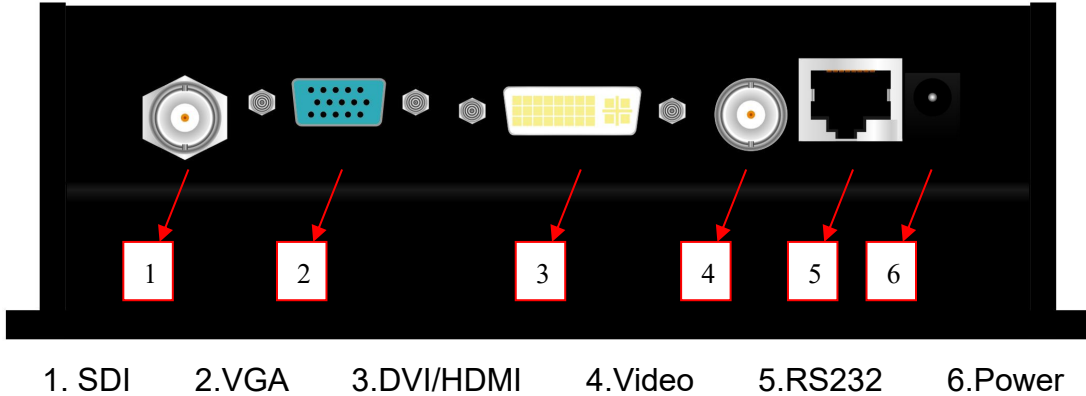
Standard accessories

The accessories supplied with this product may differ from the following pictures, but they are applicable for the regions where you live.

		
1.5m Power cord X 1	Power adapter X 1	1.5m DVI cable X 2
		
BNC-RCA adapter X 2	1.5m RJ45-RS232 adapter cable X 2	Power supply mounting bracket X 1
		
User Manual X 1	CD of control software X 1	

Chapter 3: Hardware connection

1. Rear view



2. Port description

1) Video input ports

Input ports include:

Port	Description
SDI	SDI/HD-SDI/3G-SDI digital signal input
VGA	PC analog signal input
DVI/HDMI	DVI/HDMI digital signal input (HDMI1.3)
Video	Composite video input (PAL/ NTSC)

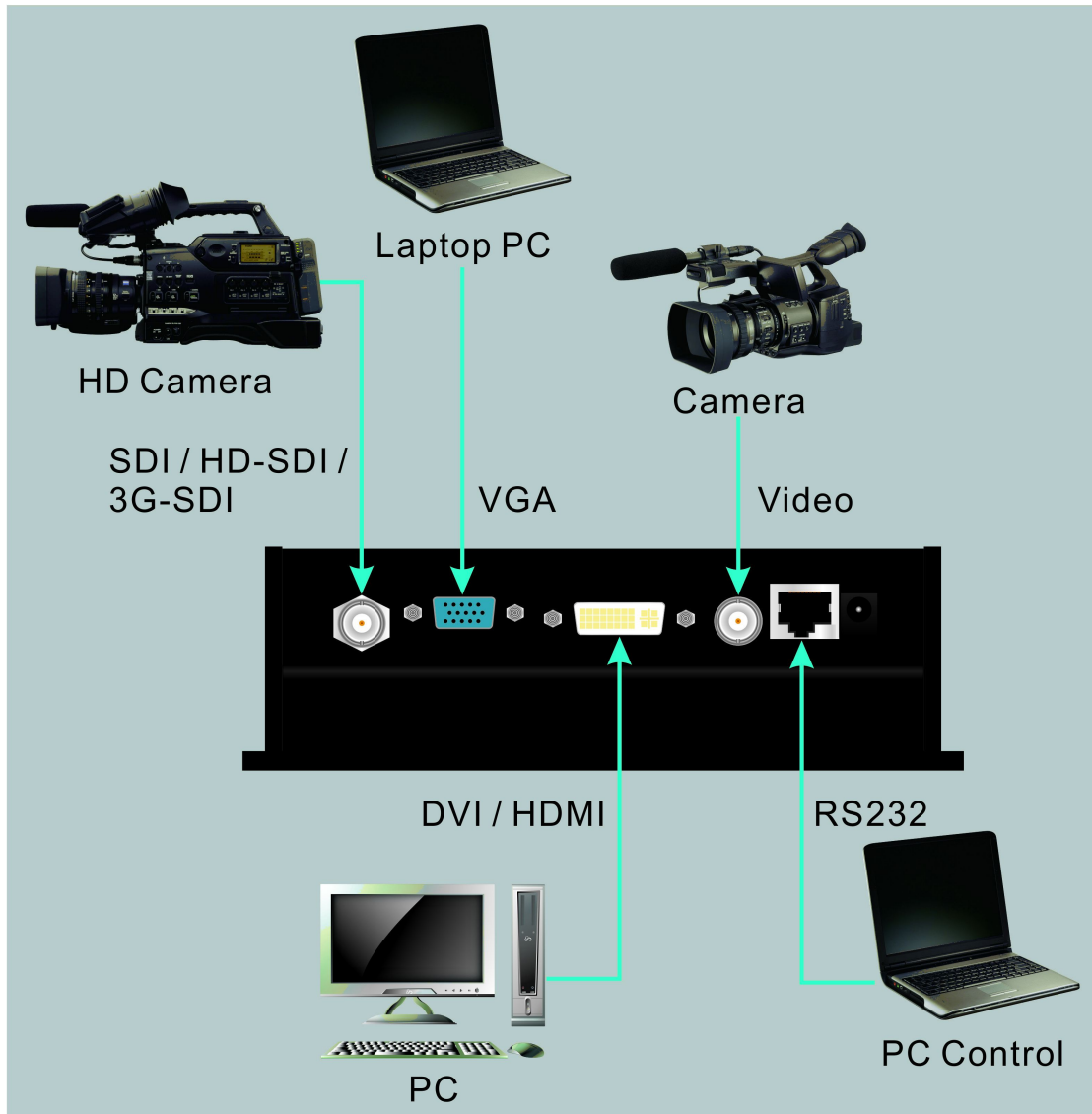
2) Communication port

Port	Description
RS232	Serial communication port, RS232 level, using RJ45-RS232 adapter cable

3) DC power input

LBM808 uses 12V DC power supply.

3. Connection diagram

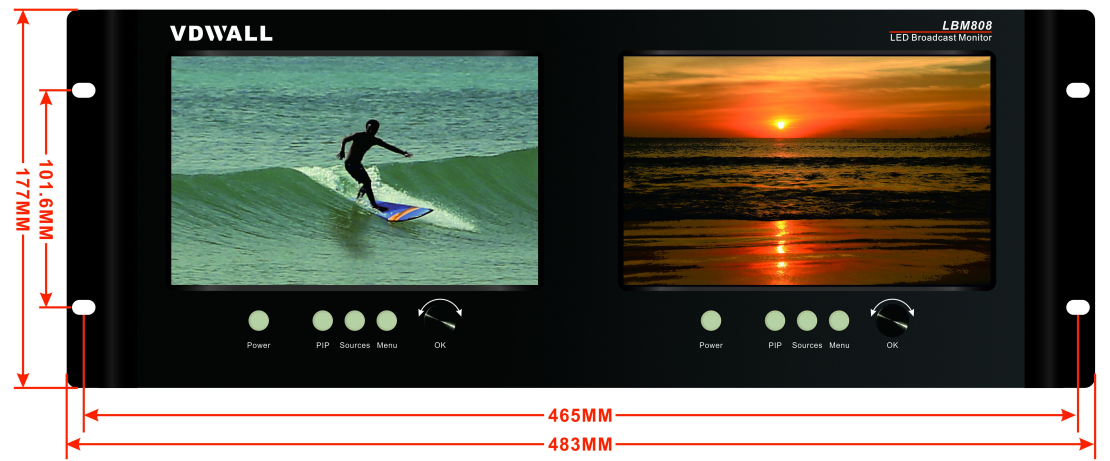
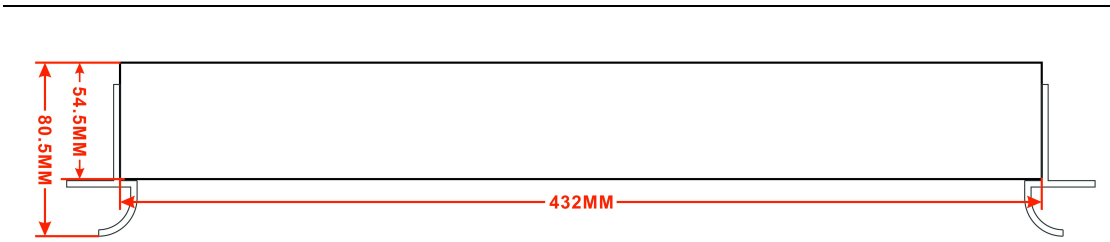


4. Specifications

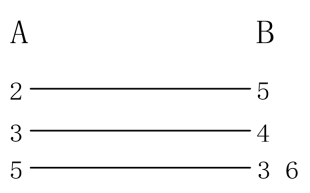
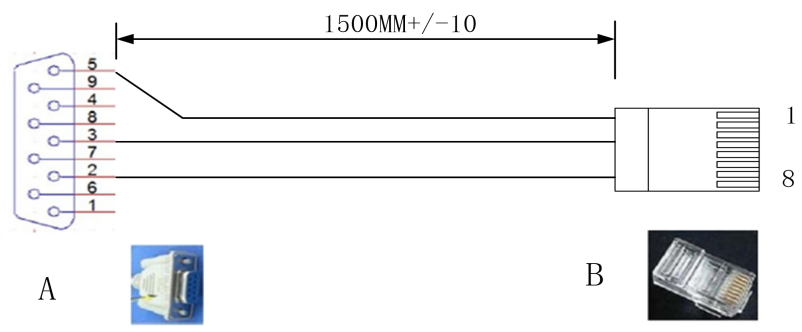
Inputs		
Number/Type	2×Video 2×VGA (RGBHV) 2×DVI/HDMI (VESA/CEA-861) 2×SDI (SDI/HD-SDI/3G-SDI)	
Video Standard	PAL/NTSC	
Composite Video Amplitude/Impendence	1V (p_p)/ 75Ω	
VGA Format	PC (VESA)	≤2304×1152_60Hz

VGA Amplitude/Impedence	R, G, B = 0.7 V (p_p) / 75Ω	
DVI Format	PC (VESA)	≤2304×1152_60Hz
	HDMI-1.3 (CEA-861)	≤1920×1080_60Hz
SDI Format	SMPTE 259M SMPTE 292M	480i_60Hz 576i_50Hz 720p,1080i,1080p
Input Connectors	Video: BNC VGA: 15-pin D_Sub(Female) DVI/HDMI: 24+1 DVI_D SDI: BNC/ 75Ω	
Output Display		
LCD panel parameters	Size: 8"	
	Resolution: 1280×800_60Hz	
	Aspect ratio: full /4:3	
	Backlight brightness: 350cd/m ² (adjustable)	
	Contrast: 900:1	
	Viewing angle: H/V 89°/89°	
Others		
Control port	RS232	
Input Voltage	DC 12V	
Maximum Power Consumption	≤24W	
Environment Temperature	0-45 °C	
Environment Humidity	15-85%	
Product Dimension	482.6mm(L) X 54.5mm(W) X 176mm (H)	
Package Dimension	530mm(L) X 155mm(W) X 250mm (H)	
Weight	G.W.: 4.0Kg, N.W.:2.8 Kg	

5. Dimension

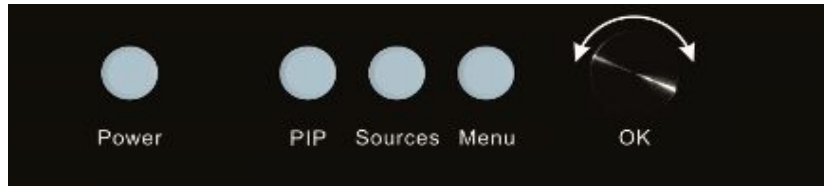


6. RJ45-RS232 adapter cable



Chapter 4: Front panel

1. Front view



- 1) **Power:** power on or off.
- 2) **PIP:** turn on or off PIP. PIP signal can be same as or different from main signal.
- 3) **Sources:** signal source selection. When PIP is on, press this button to select the PIP signal. When PIP is off, press this button to select the main signal.
- 4) **Menu:** press this button to enter the setup menu.
- 5) **Knob:** rotate the knob to select a setting or adjust parameters.
- 6) **OK:** press this button to confirm the operation.

Chapter 5: Basic operation introduction

1. Power switch

Press “Power” to power on or off. For example, we can power off to leave the device on standby.

2. Main source selection

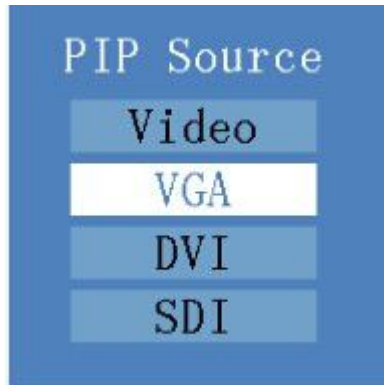
Press “Sources” to enter main source selection menu. Rotate the knob to select a source and then press “OK” to confirm.



3. PIP source selection

Press “PIP” to start the PIP mode and press “Sources” to enter PIP source selection menu. Rotate the knob to select a source and press “OK”

to confirm. The display is as follows:



4. Main settings

Press "Menu" to enter the main menu, rotate the knob to select a setting and then press "OK" to enter the submenu. Rotate the knob again to adjust the parameters and press "OK" to confirm. Press "Menu" again to return to the main menu. The display is as follows:

Lang/语言	English
Brightness	50
Contrast	50
Saturation	50
Sharpness	Normal
Aspect Ratio	Full
VGA Auto	Adjust
Backlight	50
PIP Mode	Off
PIP Position	Top-Left
FactoryReset	Reset

1) **Lang/语言:**

OSD menu language setup and it supports Chinese and English.

2) **Brightness:**

Adjustment range of brightness of LCD is 0~100. The default is

50.

3) Contrast:

Adjustment range of contrast of LCD is 0~100. The default is 50.

4) Saturation:

Adjustment range of saturation of LCD is 0~100. The default is 50.

5) Sharpness:

Sharpness of LCD can be set as normal or sharp.

6) Aspect ratio:

Aspect ratio of LCD can be set as full or 4:3.

7) VGA Auto:

When the current input signal is VGA and the signal works properly, press "OK" to confirm automatic adjustment.

8) Backlight:

Adjustment range of backlight of LCD is 0~100. The default is 50.

9) PIP Mode:

Dual display mode includes Picture-in-Picture (PIP) and Picture-by-Picture (PBP).

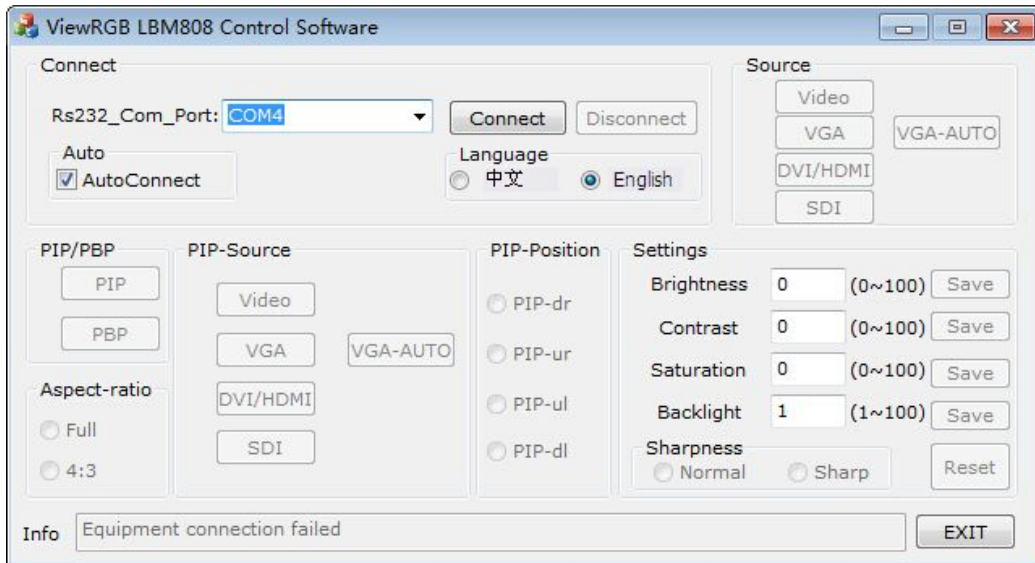
10) PIP Position:

PIP location can be set as top-left, top-right, bottom-left or bottom right.

11) Factory Reset:

This will reset the device to factory default settings.

Chapter 6: Control software



1. Connect: device connection.
2. Source: select the main source.
3. PIP/PBP: turn on or off PIP or PBP.
4. Aspect ratio: full screen or 4:3.
5. PIP-Source: select the PIP source.
6. PIP-Position: select the PIP position.
7. Settings: set brightness, contrast, sharpness and etc. If the value set is beyond adjustment range, users will be prompted for invalid operation.

Chapter 7: Copyright information

The copyright of this manual is owned by SHENZHEN VD WALL CO., LTD., unless with prior consent of VD WALL, nobody is permitted to copy or use any part or all of the information contained herein.

This manual is provided for reference only, VD WALL reserves right to change the product appearance, dimensions and specifications from time to time without notice to users.