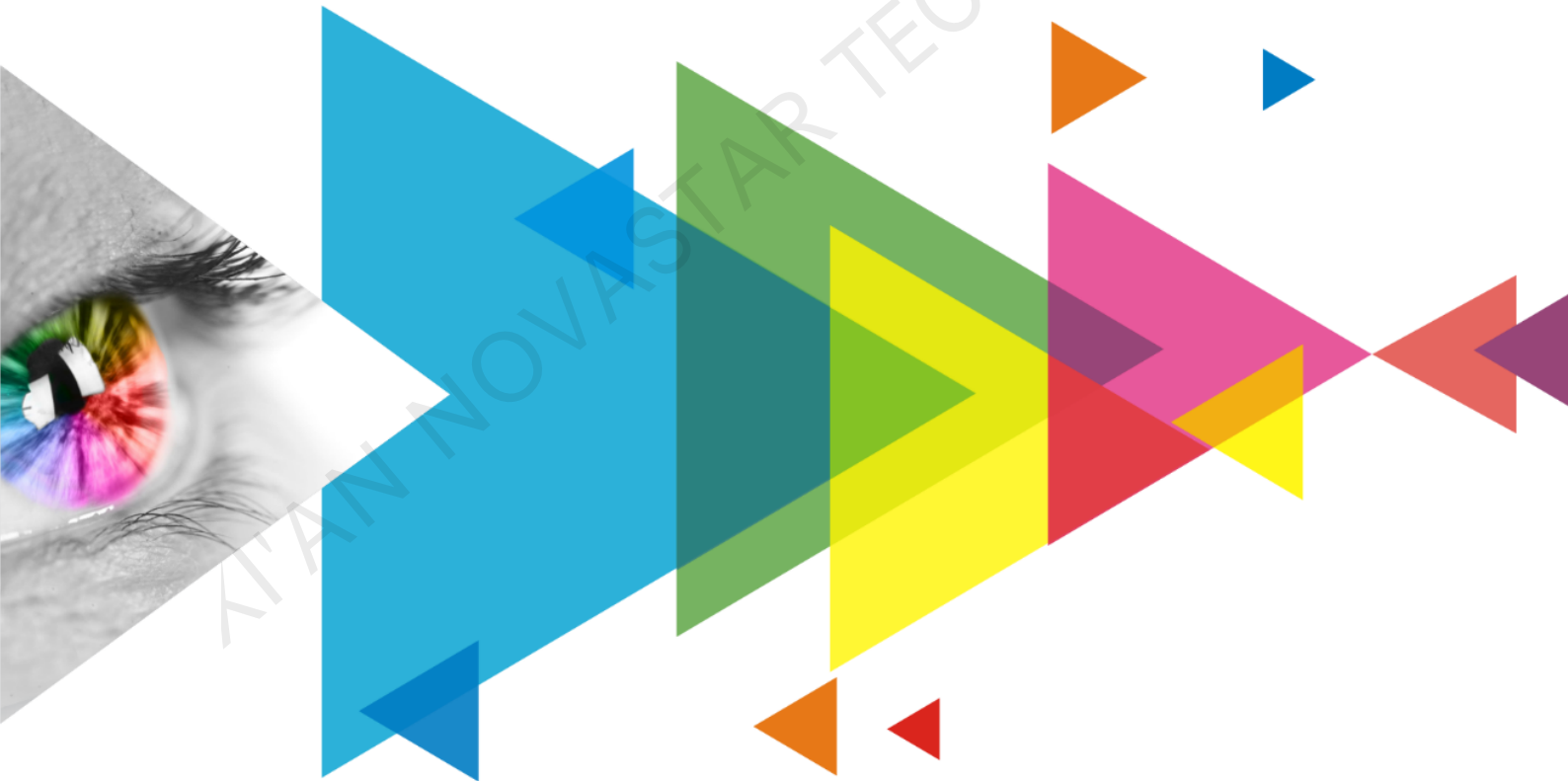


# MRV336

## Receiving Card

V1.1.2



Specifications

## Change History

Document Version	Release Date	Description
V1.1.2	2020-09-18	<ul style="list-style-type: none"> <li>• Optimized the product introduction.</li> <li>• Optimized the feature description.</li> <li>• Optimized the legends in the appearance diagram.</li> <li>• Optimized the indicator description.</li> <li>• Optimized the dimensions diagram.</li> <li>• Optimized the pin description.</li> <li>• Optimized the specifications table.</li> </ul>

## Introduction

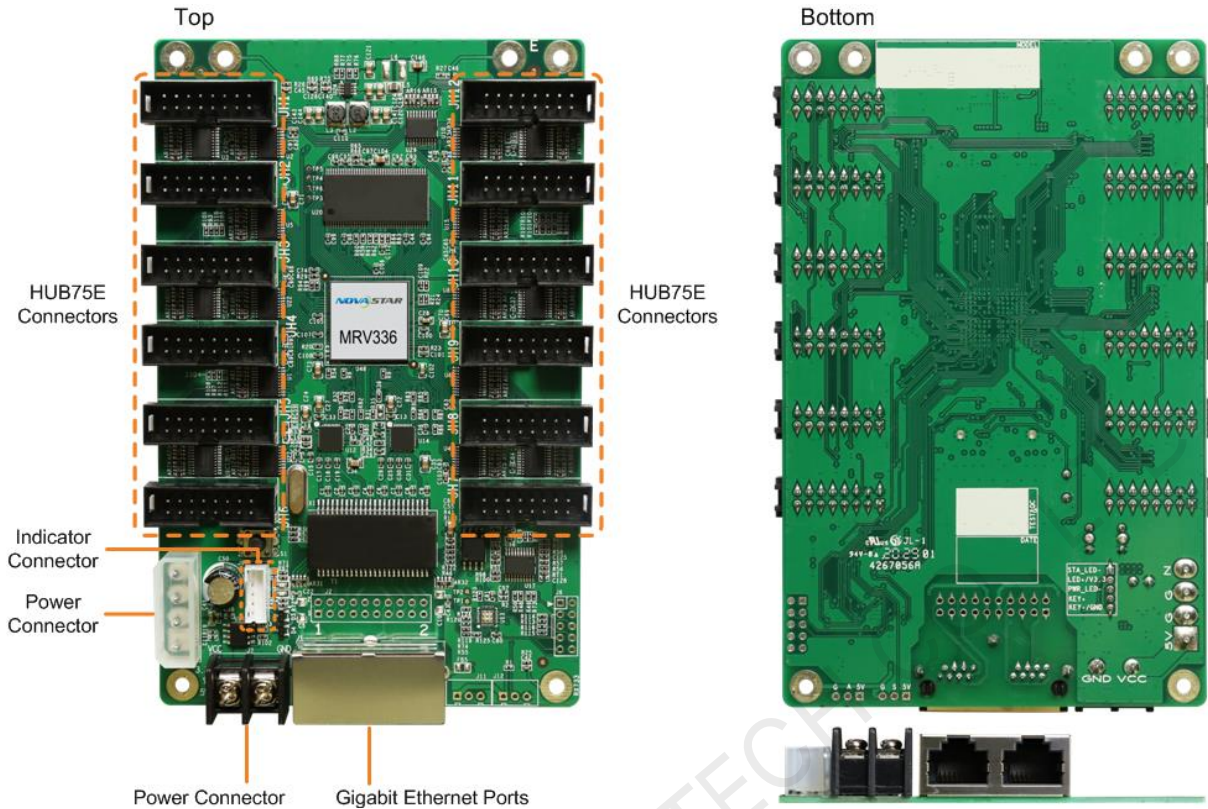
The MRV336 is a general receiving card developed by NovaStar. A single MRV336 loads up to 256x226 pixels. Supporting various functions such as pixel level brightness and chroma calibration, the MRV336 can greatly improve the display effect and user experience.

The MRV336 uses 12 standard HUB75E connectors for communication, resulting in high stability. It supports up to 24 groups of parallel RGB data. Thanks to its EMC compliant hardware design, the MRV336 has improved electromagnetic compatibility and is suitable to various on-site setups.

## Features

- Support for 1/32 scan
- Pixel level brightness and chroma calibration
- Support for setting of a pre-stored image in receiving card
- Configuration parameter readback
- Temperature monitoring
- Ethernet cable communication status monitoring
- Power supply voltage monitoring

## Appearance



All product pictures shown in this document are for illustration purpose only. Actual product may vary.

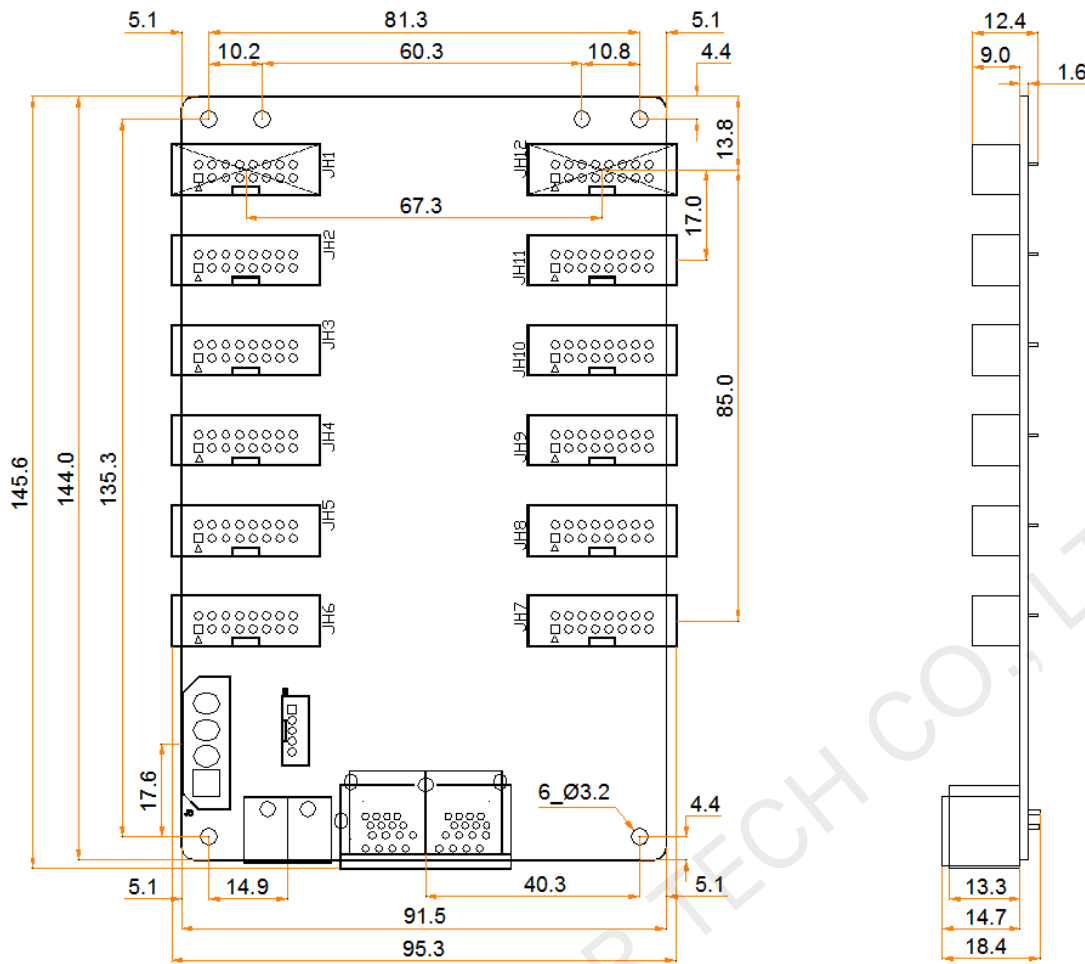
Pin Definitions of the Indicator Connector (J9)				
1	2	3	4	5
STA_LED	LED +/3.3V	PWR_LED-	KEY+	KEY-/GND

## Indicators

Indicator	Color	Status	Description
Running indicator	Green	Flashing once every 1s	The receiving card is functioning normally. Ethernet cable connection is normal, and video source input is available.
		Flashing once every 3s	Ethernet cable connection is abnormal.
		Flashing 3 times every 0.5s	Ethernet cable connection is normal, but no video source input is available.
		Flashing once every 0.2s	The receiving card failed to load the program in the application area and now is using the backup program.
		Flashing 8 times every 0.5s	A redundancy switchover occurred on the Ethernet port and the loop backup has taken effect.
Power indicator	Red	Always on	The power supply is normal.

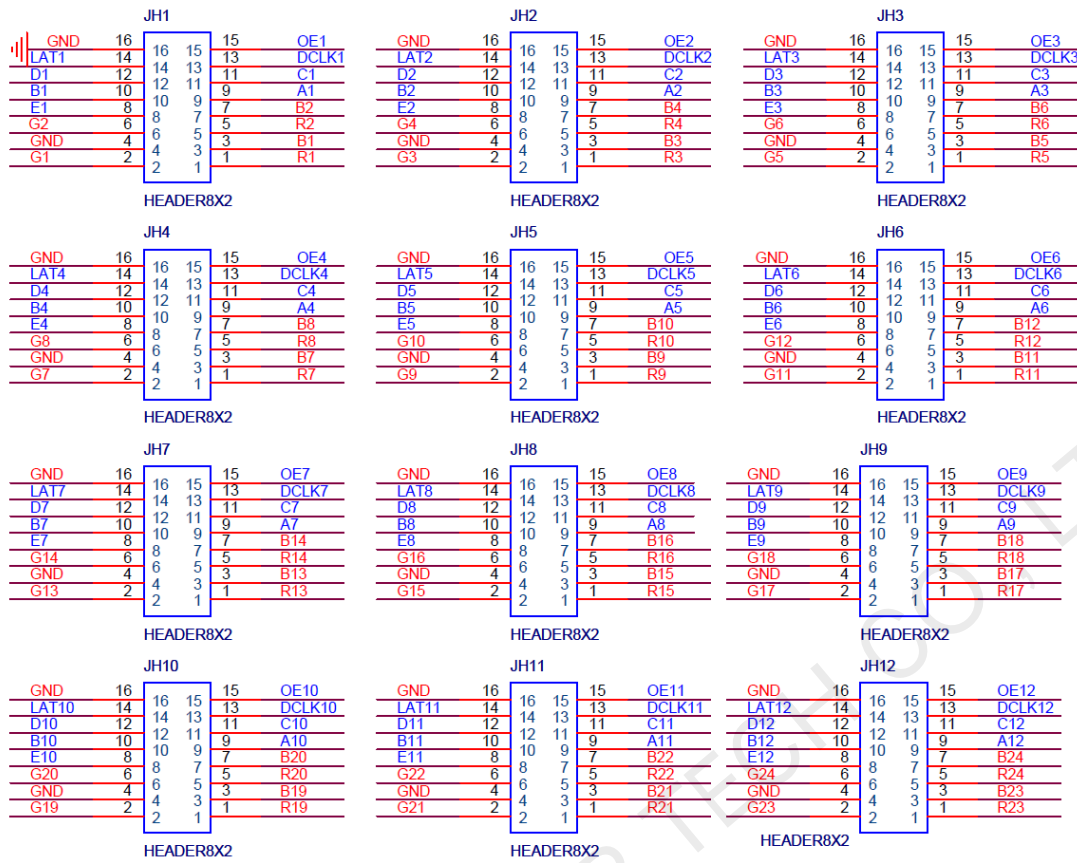
## Dimensions

The board thickness is not greater than 2.0 mm, and the total thickness (board thickness + thickness of components on the top and bottom sides) is not greater than 19.0 mm. Ground connection (GND) is enabled for mounting holes.



Tolerance: ±0.1 Unit: mm

## Pins



Pin Definitions					
/	R	1	2	G	/
/	B	3	4	GND	Ground
/	R	5	6	G	/
/	B	7	8	E	Line decoding signal
Line decoding signal	A	9	10	B	
	C	11	12	D	
Shift clock	DCLK	13	14	LAT	Latch signal
Display enable signal	OE	15	16	GND	Ground

## Specifications

Maximum Loading Capacity	256 × 226 pixels	
Electrical Specifications	Input voltage	DC 3.3 V to 5.5 V
	Rated current	0.5 A
	Rated power consumption	2.5 W
Operating Environment	Temperature	-20°C to +70°C
	Humidity	10% RH to 90% RH, non-condensing
Storage	Temperature	-25°C to +125°C

Environment	Humidity	0% RH to 95% RH, non-condensing
Physical Specifications	Dimensions	145.6 mm × 95.3 mm × 18.4 mm
Packing Information	Packing specifications	An antistatic bag and anti-collision foam are provided for each receiving card. Each packing box contains 100 receiving cards.
	Packing box dimensions	650.0 mm × 500.0 mm × 200.0 mm
Certifications	RoHS, EMC Class A	

The amount of current and power consumption may vary depending on factors such as product settings, usage, and environment.

XI'AN NOVASTAR TECH CO., LTD

**Copyright © 2020 Xi'an NovaStar Tech Co., Ltd. All Rights Reserved.**

No part of this document may be copied, reproduced, extracted or transmitted in any form or by any means without the prior written consent of Xi'an NovaStar Tech Co., Ltd.

#### **Trademark**

**NOVA STAR** is a trademark of Xi'an NovaStar Tech Co., Ltd.

#### **Statement**

Thank you for choosing NovaStar's product. This document is intended to help you understand and use the product. For accuracy and reliability, NovaStar may make improvements and/or changes to this document at any time and without notice. If you experience any problems in use or have any suggestions, please contact us via the contact information given in this document. We will do our best to solve any issues, as well as evaluate and implement any suggestions.

| [Official website](http://www.novastar.tech)  
| [www.novastar.tech](http://www.novastar.tech)

| [Technical support](mailto:support@novastar.tech)  
| [support@novastar.tech](mailto:support@novastar.tech)